

PARTY platters

70
EACH

NO SUBSTITUTIONS

PLATTER A (all Nigiri)

4 pc. Tuna . 4 pc. Hamachi . 4 pc. F. Salmon
4 pc. Albacore . 4 pc. White Fish . 4 pc. Ebi
4 pc. Chef's Selection . 4 pc. Unagi



PLATTER B (all rolls)

1 Michi Roll . 1 Fair Oaks Roll . 1 Bob's Roll
1 #911 Roll . 1 Tempura Lobster Roll
1 #8 Roll . 1 Dream 2 Roll . 1 California 2 Roll



PLATTER C (rolls & Nigiri)

1 Michi Roll . 1 Fair Oaks Roll . 1 Bob's Roll
1 Spicy Tuna Roll . 4 pc. Tuna . 4 pc. Hamachi
4 pc. Albacore . 4 pc. Ebi



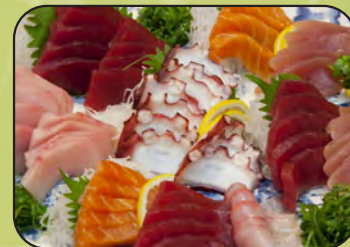
PLATTER D (rolls & special dishes)

1 Fair Oaks Roll . 1 Bob's Roll . 1 Sea Steak
1 BBQ Albacore . 1 Michi Roll . 1 Spicy Tuna
1 Garlic Salmon



PLATTER E

Chef's selection of today's
freshest sashimi



PLATTER F (rolls, nigiri & sashimi)

1 Fair Oaks Roll . 1 Bob's Roll
1 Tempura Lobster Roll . 4 pc. Tuna
4 pc. White Tuna
A selection of today's freshest sashimi



PLATTER G (for non-raw fans!)

Edamame . Crispy Gyoza
Ebi Fry . Chicken Teriyaki

